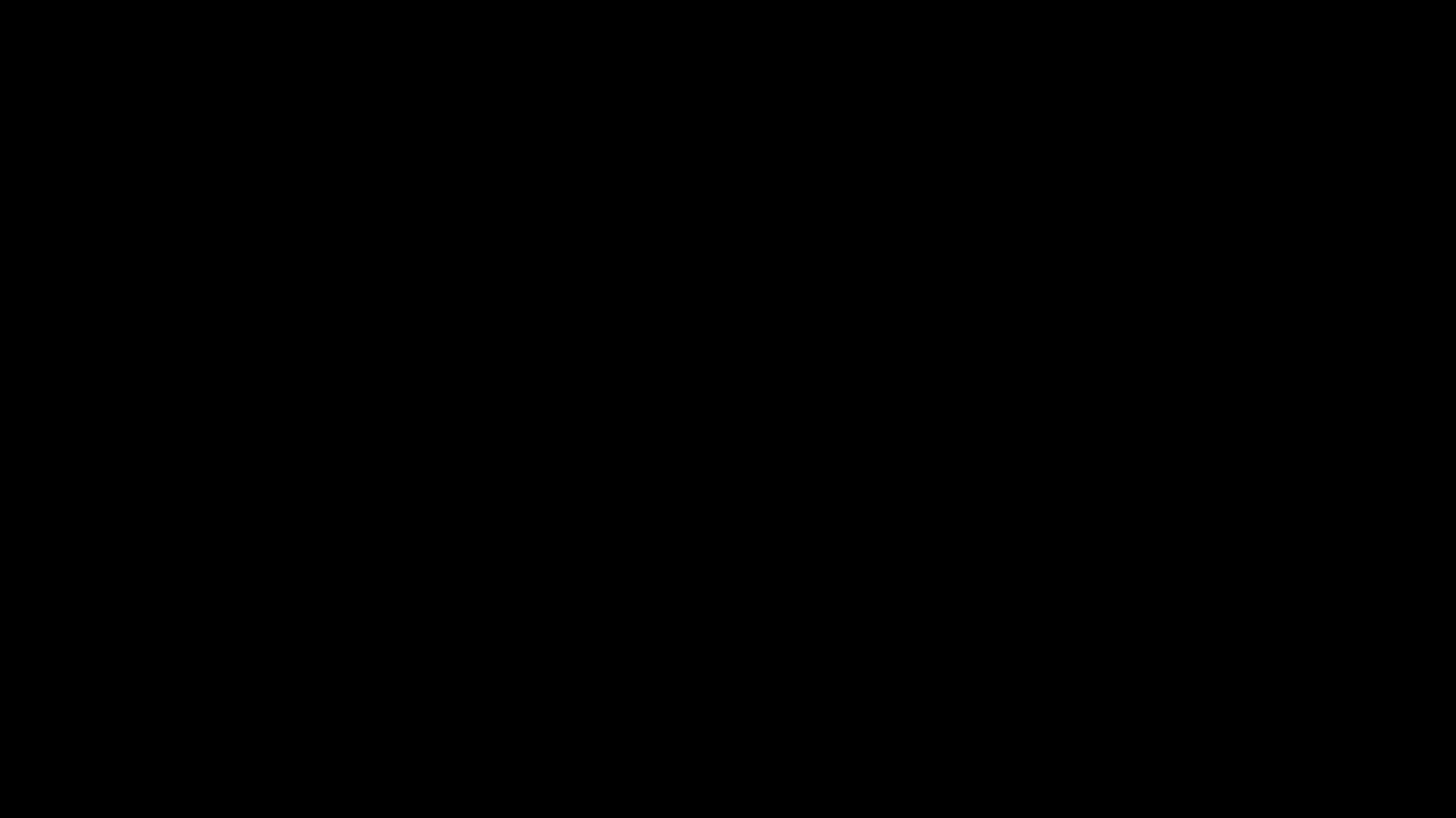


Girls and autism

*Minna Anaukwu
and
Rosie Wickes*





Aspects of autism in girls

Communication
and Friendships

Behaviour

Interests

Sensory and
Physical

Sex and Gender

Mental Health

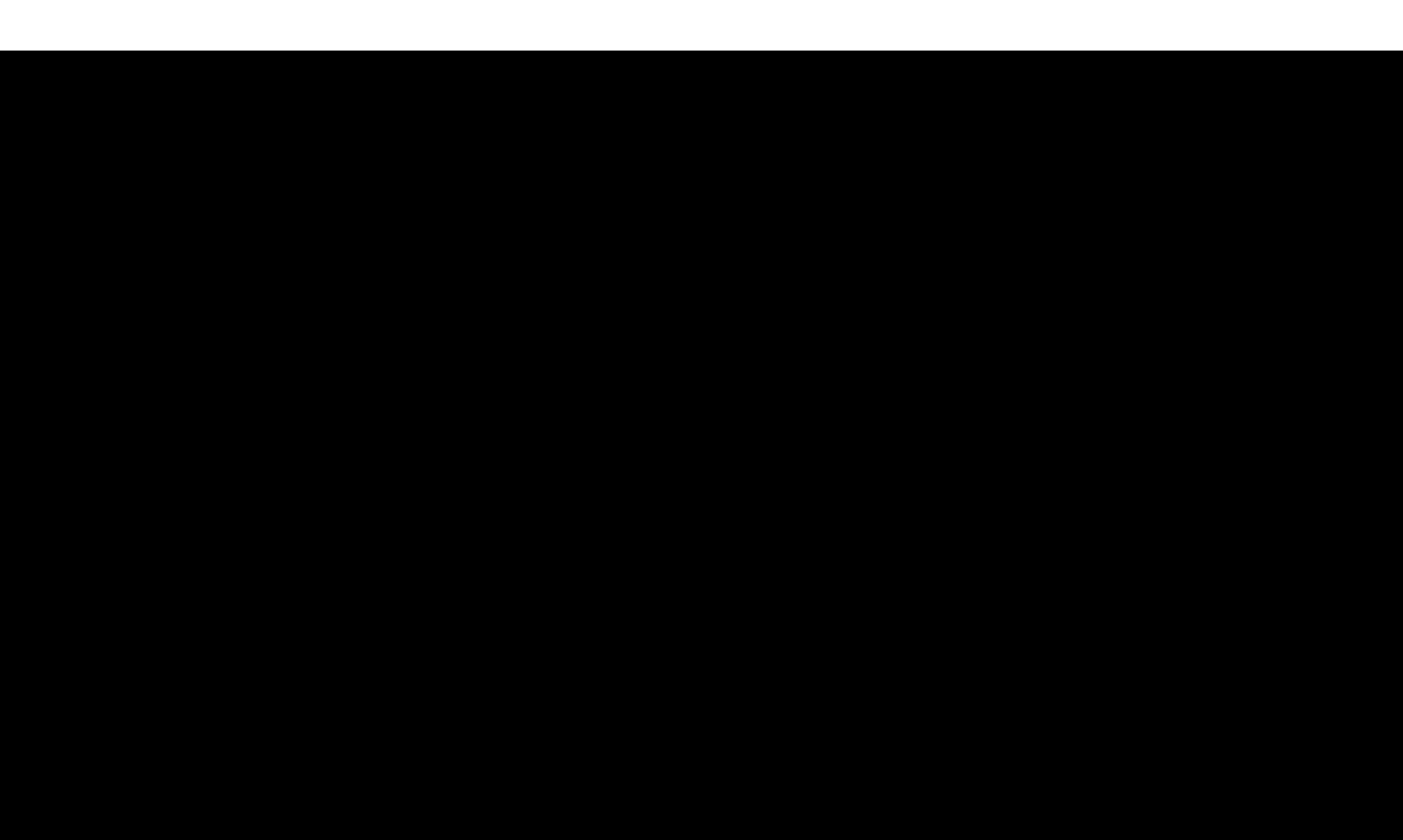


Communication and Friendships

What challenges do you see girls with autism facing in relation to friendships and communication?

- Periphery of groups (copying)
- Intense close friendships
- Social rules of teenage girls
- People-focused
- Age of friendships

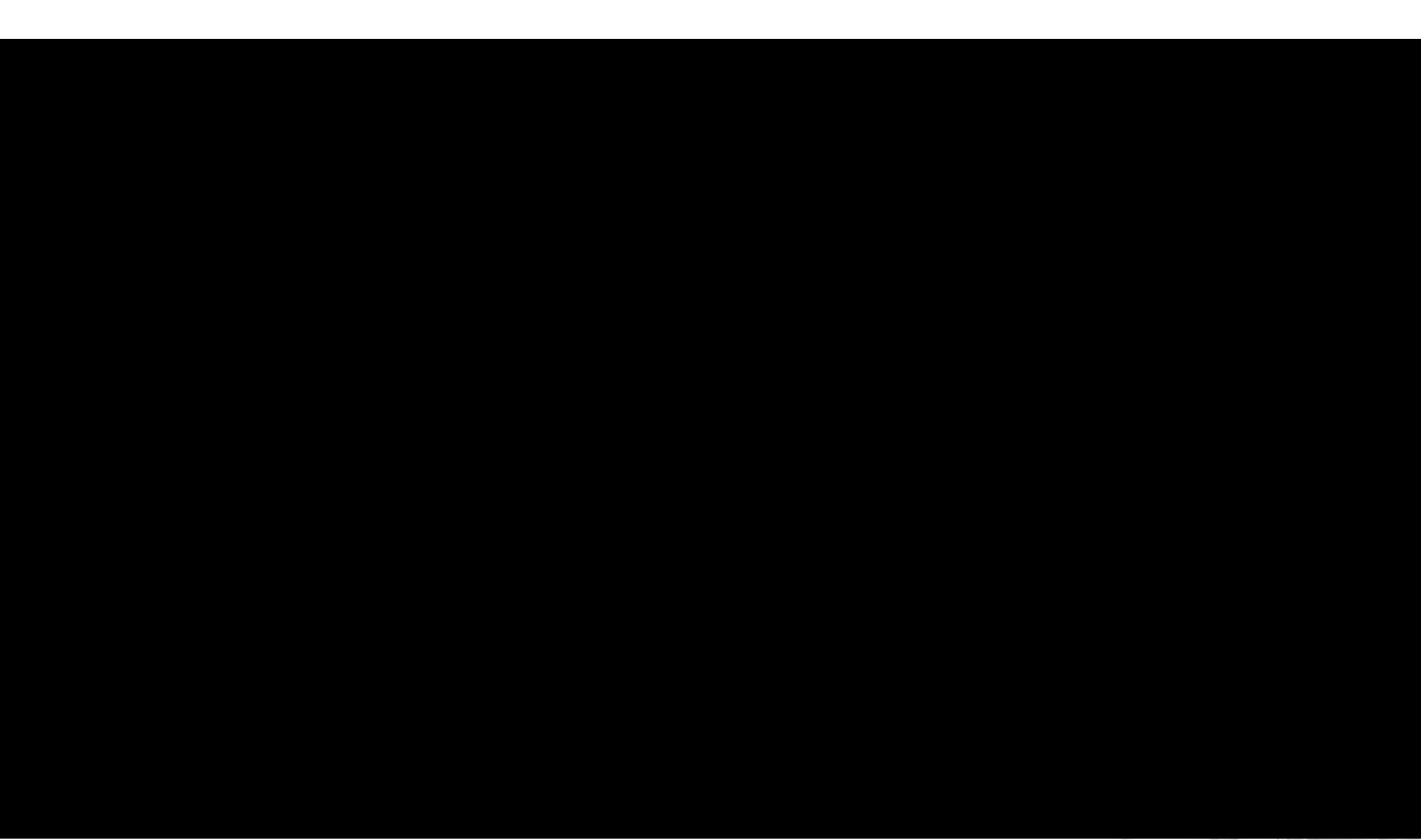




Behaviour

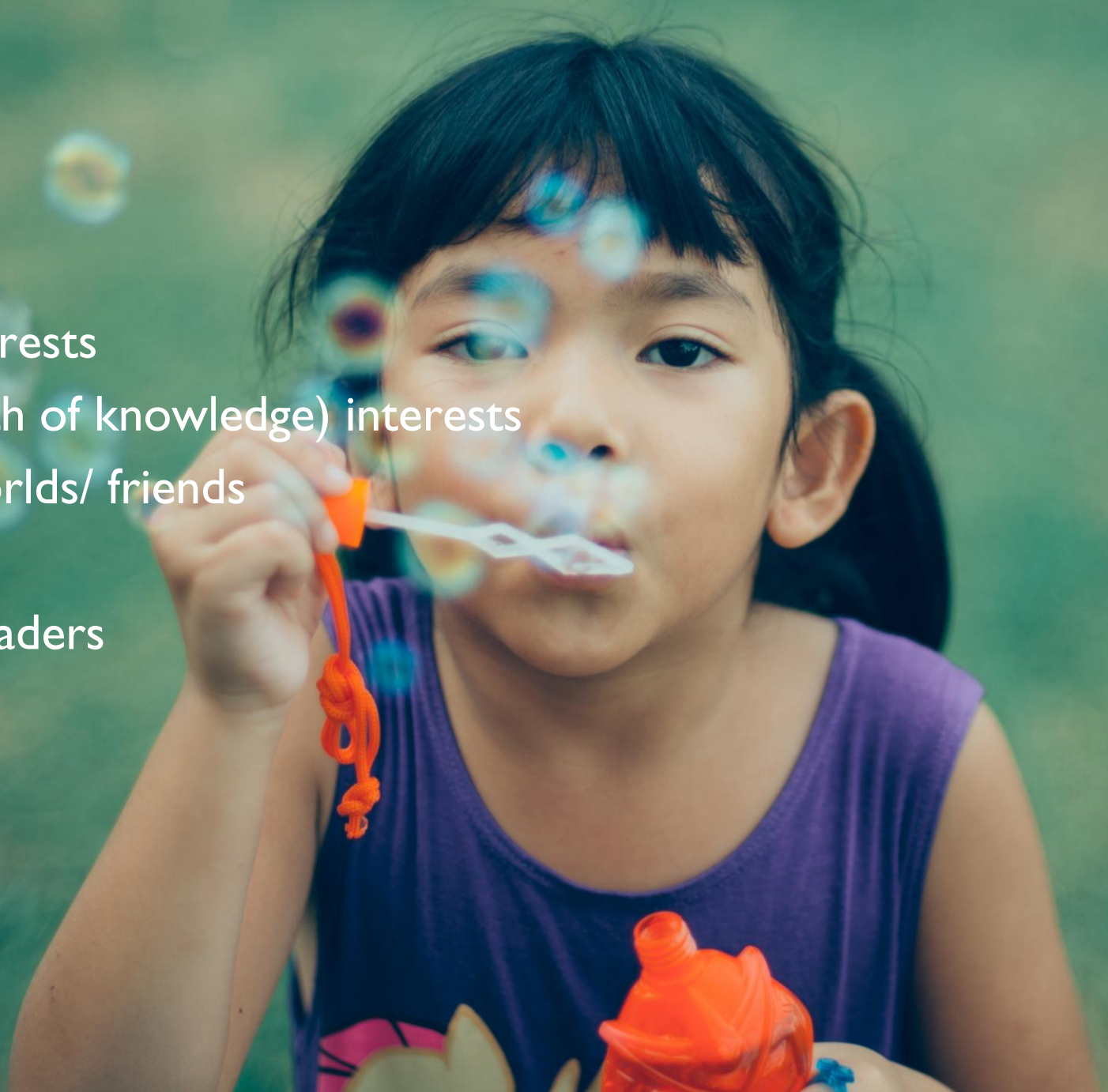
- Internalising response to challenges
- Challenging authority
- Behaviour at home
- Behaviour with peers





Interests

- Types of interests
- Intense (depth of knowledge) interests
- Imaginary worlds/ friends
- Play skills
- Voracious readers

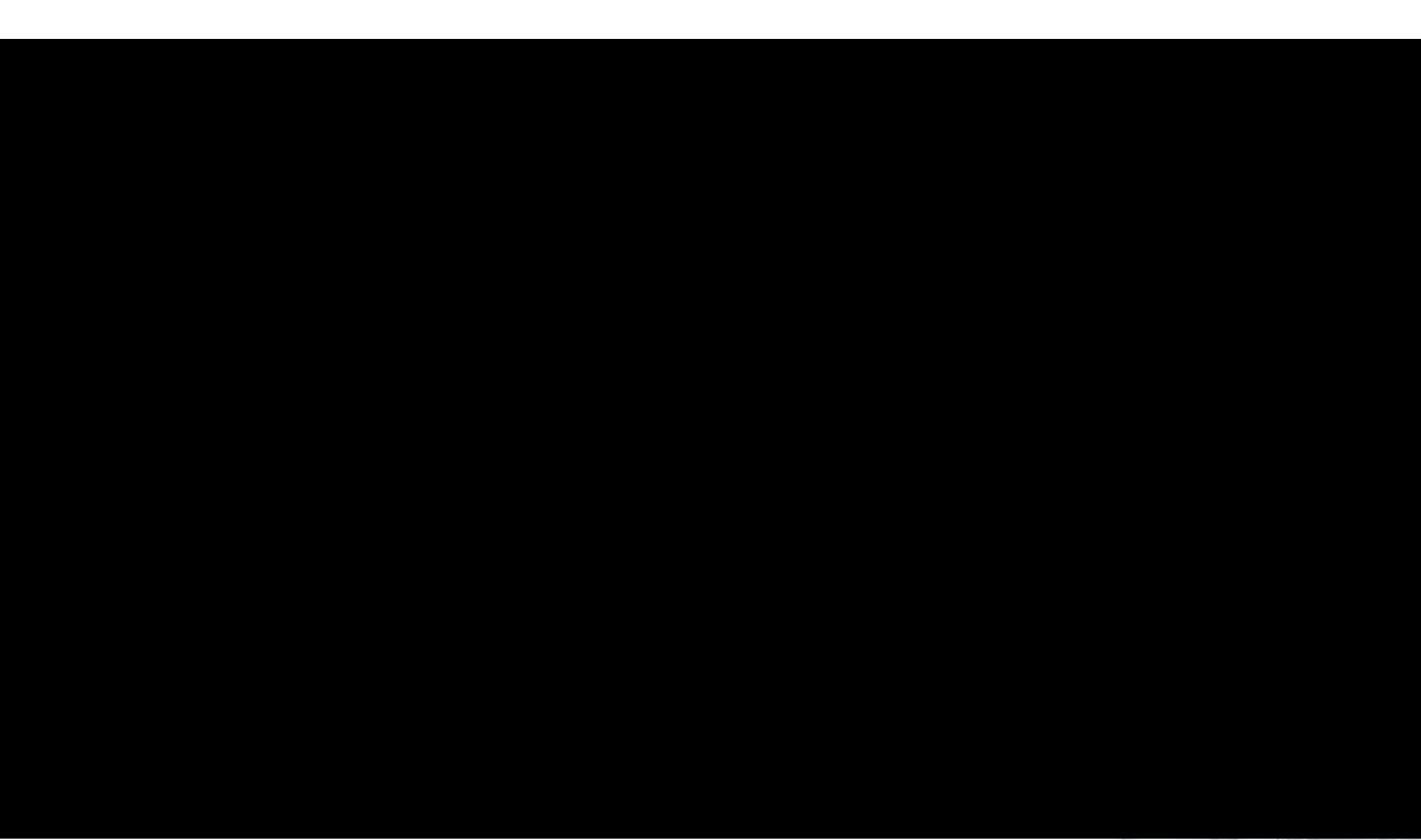




Sensory and physical

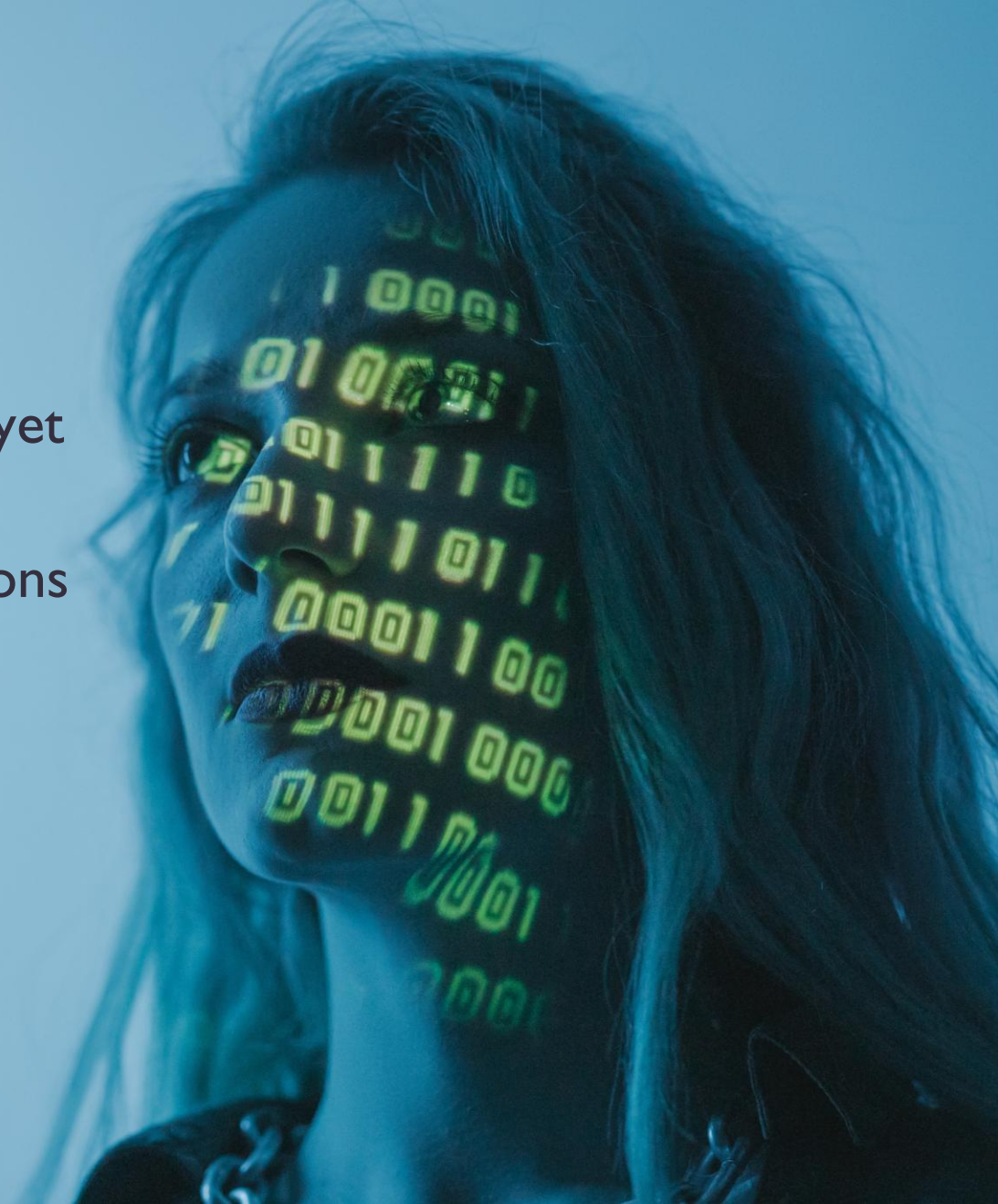
- Sensory needs are similar to those of boys with autism
- Alexythemia
- Changes in sensory sensitivity during adolescence
- Self-harming
- Food sensitivities

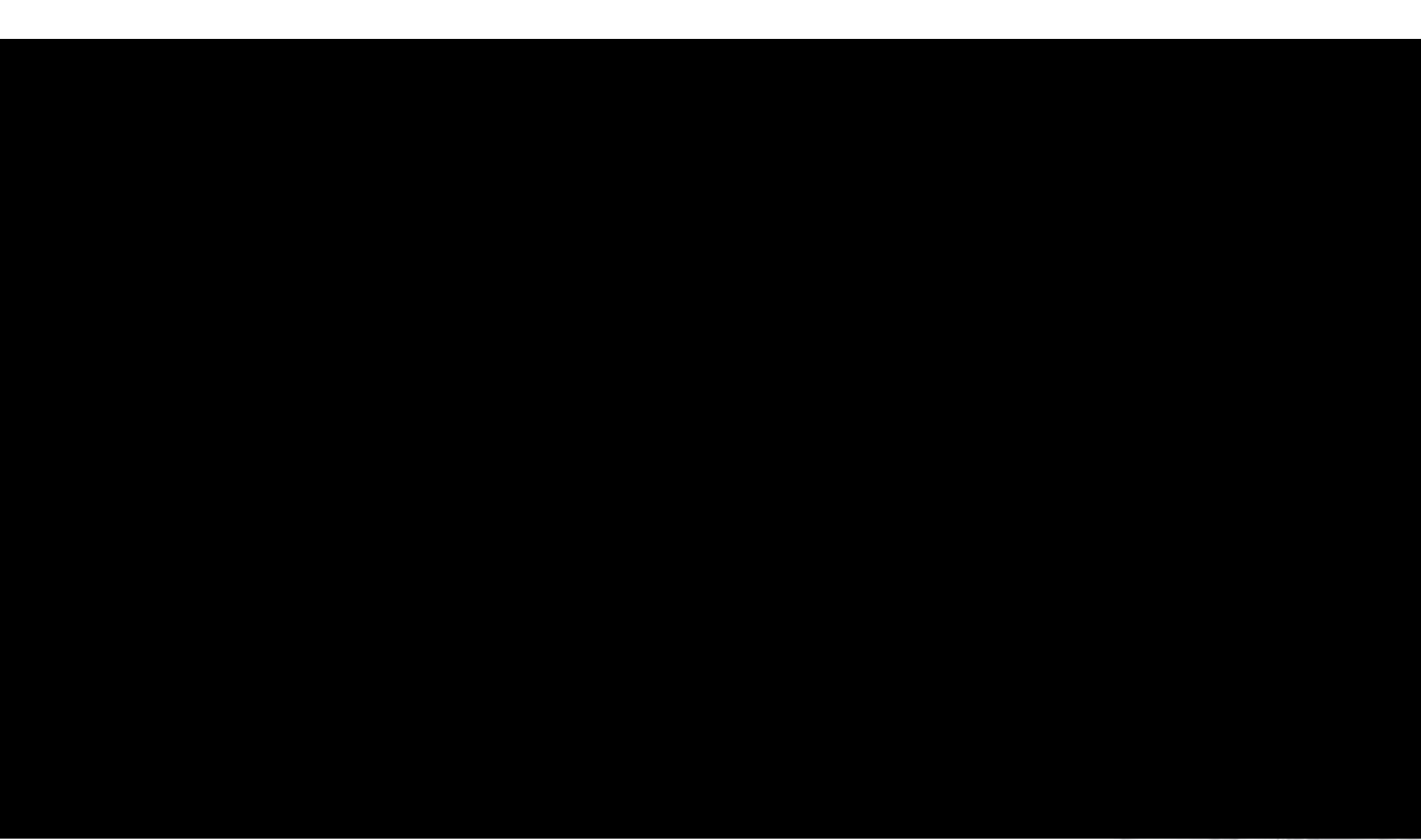




Sex and gender

- Higher prevalence of gender fluidity – the reasons are not yet known
- Not fitting into binary definitions of gender
- Trying on personas
- Preferring boys' company





Mental Health

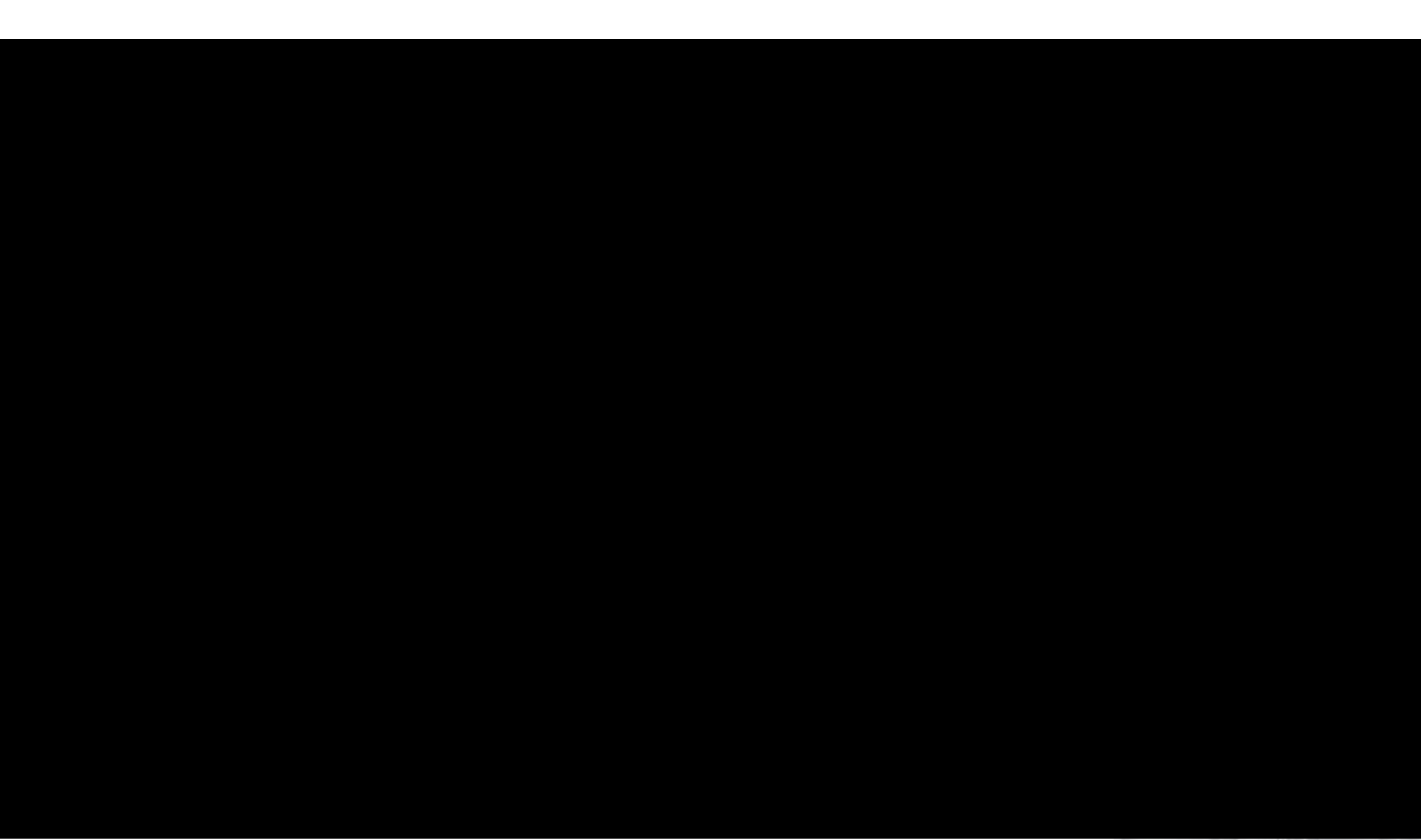
- Anxiety
- Depression
- Self-harm
- Eating disorders



Masking / Camouflaging

In what ways have you seen girls mask?







Why is it important to get a diagnosis?

Support

Explanation

Self identity

Mental Health

Self diagnosis

Services



Further Reading

